

Aluminum

Cluster Box Units

Cluster Box Units (CBU's)

CLUSTER BOX UNITS FRONT LOADING

Made of aluminum, 3300 series U.S.P.S. approved pedestal cluster box units (CBU's) are accessed from the front through easy opening master door panels. Each aluminum door includes a five (5) pin cylinder cam lock with a dust/rain shield and three (3) keys. One additional compartment in each unit is identified as an "Outgoing Mail" receptacle and includes a weather protection flap and a 10-3/4" W x 1" H mail slot. The durable and corrosion resistant units can be mounted on the optional pedestals (#3385 for #3316 and #3313 and #3395 for #3308 and #3312) or a base of your choice.



3308
Type I



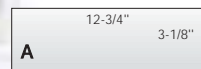
3395
pedestal
order separately



PARCEL LOCKERS offer tenants a convenient way to receive packages on site and are fit with a two (2) key security system. When the U.S. Postal Service delivers a parcel to the locker, a parcel locker key is placed in the recipient's mailbox. Once the recipient opens the parcel locker, the key is automatically retained in the lock until it is removed with a control key. Parcel lockers include both the tenant lock and the master postal lock.

Note: For stand alone parcel locker units, see #3402 on page 7.

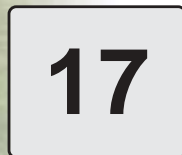
3300 Series Door Sizes



#3351 Replacement door
\$40.00



#3352 Replacement door
\$50.00



CUSTOM ENGRAVED PLACARDS (#3367)

1-3/4" W x 1-1/2" H custom engraved self-adhesive placards are available as an option upon request.
\$3.00



3312
Type II



3316
Type III



3313
Type IV

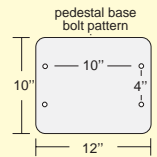
CLUSTER BOX UNITS - FRONT LOADING - U.S.P.S. APPROVED

MODEL	DESCRIPTION	UNIT SIZE	WEIGHT	PRICE
3308	8 Doors - Type I - CBU (8) "A" mail compartments (1) outgoing mail receptacle (2) parcel lockers	28-1/2" W x 31-3/4" H x 17-3/4" D 12" W x 3" H x 15" D 12" W x 3" H x 15" D (slot 10-3/4" W x 1" H) (1) 12" W x 13" H x 15" D (1) 12" W x 10" H x 15" D	95 lbs.	\$1,150.00
3312	12 Doors - Type II - CBU (12) "A" mail compartments (1) outgoing mail receptacle (1) parcel locker	28-1/2" W x 31-3/4" H x 17-3/4" D 12" W x 3" H x 15" D 12" W x 3" H x 15" D (slot 10-3/4" W x 1" H) 12" W x 10" H x 15" D	95 lbs.	\$1,200.00
3316	16 Doors - Type III - CBU (16) "A" mail compartments (1) outgoing mail receptacle (2) parcel lockers	28-1/2" W x 45-3/4" H x 17-3/4" D 12" W x 3" H x 15" D 12" W x 3" H x 15" D (slot 10-3/4" W x 1" H) (1) 12" W x 13" H x 15" D (1) 12" W x 10" H x 15" D	130 lbs.	\$1,250.00
3313	13 Doors - Type IV - CBU (13) "B" mail compartments (1) outgoing mail receptacle (1) parcel locker	28-1/2" W x 45-3/4" H x 17-3/4" D 12" W x 4-3/4" H x 15" D 12" W x 4-3/4" H x 15" D (slot 10-3/4" W x 1" H) 12" W x 10" H x 15" D	125 lbs.	\$1,225.00
3385	Pedestal for #3316, #3313	17" H base 12" W x 10" D	20 lbs.	\$75.00
3395	Pedestal for #3308, #3312	31" H base 12" W x 10" D	30 lbs.	\$75.00
3377	Lock - replacement for 3300 series parcel locker doors - with (3) keys			\$50.00
3390	Lock - standard replacement for 3300 series doors - with (3) keys			\$5.00
3399	Key blanks - for standard 3300 series locks - box of (50)			\$25.00

CLUSTER BOX UNIT OPTIONS

OPTIONS

- Pedestal - for #3316 and #3313 (#3385 - \$75.00)
- Pedestal - for #3308 and #3312 (#3395 - \$75.00)



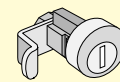
DOOR IDENTIFICATION SYSTEMS

Each aluminum CBU mailbox door has a 1" H number (1-8, 1-12, 1-16, 1-13 for Type I, Type II, Type III and Type IV, respectively). The mail receptacle is labeled "Outgoing Mail" and the parcel locker(s) are labeled with a "P" and a corresponding number, i.e. "1" on #3312 and #3313 and "1" and "2" on #3308 and #3316. Custom identification systems are available as an option upon request.

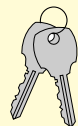
LOCKS

Each aluminum CBU mailbox door includes a five (5) pin cylinder cam lock with a dust/rain shield and three (3) keys (1,000 different key changes).

- Additional keys per lock when ordering (#3398 - \$2.00)
- Key blanks - box of (50) (#3399 - \$25.00)



#3390
Lock for 3300 series
\$5.00



#3398
Additional keys for #3390
\$2.00 per key

Cluster Box Units (CBU's) - Continued

- **USPS Approved**
- **All Aluminum Construction**
- **Easy Opening Doors**
- **Built-in Parcel Lockers**
- **Stainless Steel Locks**
- **Corrosion Resistant**



#3316 with open master doors displayed

Note: For additional CBU product specifications and prices - see pages 4-5

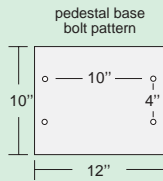
PEDESTAL PARCEL LOCKERS USPS access or PRIVATE access
FRONT LOADING

Molded from high impact polycarbonate, 3400 series U.S.P.S. approved two (2) compartment pedestal parcel lockers offer tenants a convenient way to receive packages on site. Each front loading compartment is 13" W x 18" H x 24-1/2" D and is fit with a two (2) key security system. Pedestal parcel lockers feature stainless steel lock fittings and can be mounted on the optional aluminum pedestal (#3465) or a base of your choice.

- 3402 Pedestal Parcel Locker**
- 13" W x 36" H x 24-1/2" D
 - 40 lbs.
 - \$500.00

- Specify
- For U.S.P.S. access
 - For private access (order master commercial lock #3475 - \$30.00)

- 3465 Pedestal - bolt mounted**
- 5" diameter x 20" H
 - base: 12" W x 10" D
 - 20 lbs.
 - \$75.00



#3402 on pedestal (#3465) displayed

PARCEL LOCKERS offer tenants a convenient way to receive packages on site and are fit with a two (2) key security system. When the U.S. Postal Service delivers a parcel to the locker, a parcel locker key is placed in the recipient's mailbox. Once the recipient opens the parcel locker, the key is automatically retained in the lock until it is removed with a control key.



#3390 lock for 3300 series with custom engraved placard (#3367) displayed



CBU's are in stock and ready to ship worldwide today.